

The Compatibility of Rudolf Steiner's Spiritual View of Evolution with Modern Science

A Deeper Look at Human Development

This four-part lecture series over Zoom will explore Rudolf Steiner's spiritual scientific view of evolution and its relation to the on-going discoveries of modern science. Sharing from his forty years of research, Michael Judge will attempt to present a plausible and coherent resolution of the natural scientific and spiritual scientific views.

I: Foundations of knowing and an overview of evolution

Saturday July 31st, 2021
1:30pm EDT

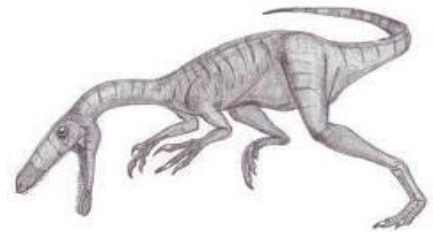


II: The drama of the “mid-point” of human evolution:
Tertiary/first half through Pleistocene (Ice Ages)
Referred to by Steiner as “Atlantean”

Sunday August 1st, 2021
1:30pm EDT

III: Human evolution begins the path of freedom through knowledge of good and evil:
Precambrian, Paleozoic, Mesozoic Geological Periods
Referred to by Steiner as “Lemurian”

Saturday August 7th, 2021
1:30pm EDT



IV: Human evolution in modern times and the capacity of individual choice:
Holocene or Anthropocene
Referred to by Steiner as “Post Atlantean”

Sunday August 8th, 2021
1:30pm EDT



Michael Judge is a graduate of the University of Maryland where he studied history, geology, anthropology and archaeology. He has a Maryland public education certification as well as a Waldorf Teaching certificate and certification in Spatial Dynamics. He has been a life-long student of modern science as well as a student of spiritual science for over 42 years.

**Sponsored by the Greater Washington Branch of the Anthroposophical Society –
ASGWB.org**

Registration and Donation to ASGWB

Please use the below link to register for the talks. Please indicate which of the talks you are planning to attend. You will be able to update your selection at any time by using the link that is provided after you submit the form:

[Register for the Talks](#)

A donation to the Greater Washington Branch of the Anthroposophical Society to support this and similar activities would be greatly appreciated. The suggested donation is \$5 to \$20 for each talk. Please use this link to make a donation:

[Donate to the ASGWB](#)

Contact Patrick O'Meara at pfomeara@gmail.com if you have any difficulties registering or have questions.